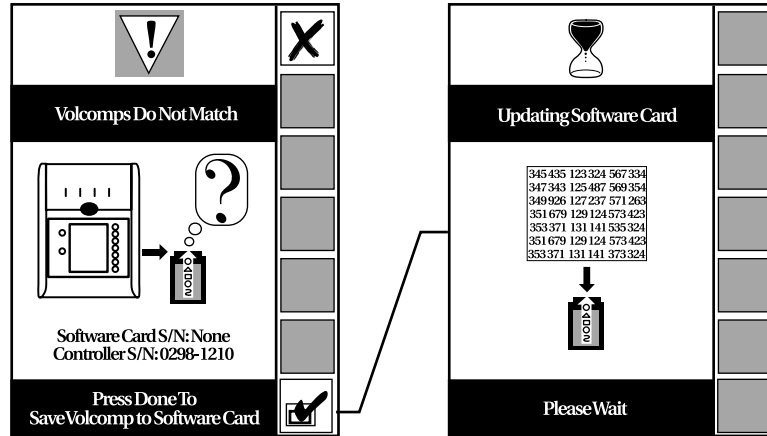


# Installing a Software Card

If you receive a new software card, do the following:

1. Remove the previous version software card from the top slot. (The controller can stay powered up.)
2. Insert the new software card in the top slot.
3. After a possible language screen, the "Volcomps Do Not Match" screen will appear as shown below. Simply press the Done softkey.



4. **Do Not** re-insert your previous version software card unless absolutely necessary. This may cause the loss of your system variables (Inches/mm, language, air-saver time, etc.).
5. If you received a defective or unprogrammed card resulting in a "frown face" icon being displayed with no error code written below it, contact your local service person for a replacement card. If there is an error code shown, the controller is experiencing other problems which may require the attention of a service person.
6. Return the old software card in the envelope provided.

# RefleX Notes